

# Operator's Manual Two Motor Vacuum



## **READ THIS BOOK**

**This book has important information for the use and safe operation of this machine. Failure to read this book prior to operating or attempting any service or maintenance procedure to your machine could result in injury to you or to other personnel; damage to the machine or to other property could occur as well. You must have training in the operation of this machine before using it. If your operator(s) cannot read English, have this manual explained fully before attempting to operate this machine. All directions given in this book are as seen from the operator's position at the rear of the machine.**

# IMPORTANT SAFETY INSTRUCTIONS

**DANGER:** Failure to read and observe all DANGER statements could result in severe bodily injury or death. Read and observe all DANGER statements found in your Owner's Manual and on your machine.

**WARNING:** Failure to read and observe all WARNING statements could result in injury to you or to other personnel; property damage could occur as well. Read and observe all WARNING statements found in your Owner's Manual and on your machine.

**CAUTION:** Failure to read and observe all CAUTION statements could result in damage to the machine or to other property. Read and observe all CAUTION statements found in your Owner's Manual and on your machine.

**WARNING:** To reduce the risk of fire, electric shock, or injury:

1. Do not leave machine when plugged in. Unplug from outlet when not in use and before servicing.
2. To reduce the risk of electric shock use indoors only.
3. Do not allow to be used as a toy. Close attention is necessary when used by or near children.
4. Use only as described in the manual. Use only manufacturer's recommended attachments.
5. Do not use with damaged cord or plug. If machine is not working as it should, has been dropped, damaged, left outdoors, or dropped into water, return it to a service center.
6. Do not pull or carry by cord, use cord as a handle, close a door on cord, or pull cord around sharp edges or corners. Do not run machine over cord. Keep cord away from heated surfaces.
7. Do not unplug by pulling on cord. To unplug, grasp the plug, not the cord.
8. Do not handle plug or machine with wet hands.
9. Do not put any object into openings. Do not use with any opening blocked; keep free of dust, lint, hair and anything that may reduce air flow.
10. Keep hair, loose clothing, fingers, and all parts of body away from openings and moving parts.
11. The following materials must not be picked up with the machine: Hot materials (glowing cigarettes, hot ashes, etc.); Inflammable, explosive or aggressive fluids (e.g. gasoline, solvents, acids, alkalines, etc.); Inflammable, explosive dusts (e.g. magnesium or aluminum dust, etc.).
12. Do not use without dust bag and/or filters in place. Use the machine only with an undamaged filter element.
13. Turn off all controls before unplugging.
14. Use extra care when cleaning on stairs.
16. Connect to properly grounded outlet. See "Grounding Instructions".

**SAVE THESE INSTRUCTIONS**

**DANGER:** Failure to read the Owner's Manual prior to operating or attempting any service or maintenance procedure to your machine could result in injury to you or to other personnel; damage to the machine or to other property could occur as well. You must have training in the operation of this machine before using it. If your operator(s) cannot read English, have this manual explained fully before attempting to operate this machine.

**DANGER:** Operating a machine that is not completely or fully assembled could result in injury or property damage. Do not operate this machine until it is completely assembled. Inspect the machine carefully before operation. Use only as described in this manual. Use only recommended attachments and replacement parts.

**WARNING:** Operating a machine without observing all labels, decals, etc., could result in injury or damage. Read all machine labels before attempting to operate the machine. Make sure all of the labels are attached or fastened to the machine. Get replacement labels and decals from your distributor.

**WARNING:** Before connecting any appliance to the appliance plug socket, the machine must always be switched off. If appliances are connected to the appliance plug socket, ensure that these appliances are also switched off when being connected to the appliance plug socket. See "Appliance Plug Socket" in the "Grounding Instructions" section in of this manual.

**CAUTION:** Making technical modifications to the machine could endanger your safety. Do not make any technical modifications to the machine.

**CAUTION:** Never spray the top section of the machine with water. Can cause danger to persons or danger of short circuits.

**CAUTION:** Wrap cord around handle when machine is not in use. Use caution not to run over cord while machine is in use.

**CAUTION:** This machine is not suitable for picking up health endangering dust.

**CAUTION:** If foam/liquid comes out, switch off immediately.

## GROUNDING INSTRUCTIONS

This appliance must be grounded. If it should malfunction or breakdown, grounding provides a path of least resistance for electric current to reduce the risk of electric shock. This appliance is equipped with a cord having an equipment grounding conductor and grounding plug. The plug must be plugged into an appropriate outlet that is properly installed and grounded in accordance with all local codes and ordinances.

**WARNING: Improper connection of the equipment grounding conductor can result in a risk of electric shock. Check with a qualified electrician or service person if you are in doubt as to whether the outlet is properly grounded. Do not modify the plug provided with the product - if it will not fit the outlet, have a proper outlet installed by a qualified electrician.**

This appliance is for use on a nominal 120-volt circuit and has a ground plug that looks like the plug illustrated in figure 1. Make sure that the appliance is connected to an outlet having the same configuration as the plug. No adapter should be used with this appliance.

**WARNING: To prevent possible electric shock, protect the machine from rain. Keep the machine in a dry building.**

**WARNING: To prevent possible electric shock, always use a 3-wire electrical system connected to the electrical ground. For maximum protection against electrical shock, use a circuit that is protected by a ground fault circuit interrupter. Consult your electrical contractor.**

**WARNING: Do not cut, remove or break the ground pin. If the outlet does not fit the plug, consult your electrical contractor.**

**WARNING: Have worn, cut or damaged cords replaced by an authorized service person.**

### EXTENSION CORDS

Use only an approved extension cord with three conductors, a plug with three terminals, and a connector body with three holes. The machine has a power cord with wire size 12 AWG (AWG means American Wire Gauge).

**WARNING: If you use an extension cord, use an extension cord with minimum wire size 10 AWG. Do not use an extension cord longer than 50 feet. Do not join two extension cords.**

### APPLIANCE PLUG SOCKET

Before connecting any appliance to the appliance plug socket, the machine must always be switched off. If appliances are connected to the appliance plug socket, ensure that these appliances are also switched off when being connected to the appliance plug socket.

**CAUTION: The operating instructions and the safety precautions contained therein must be observed when using appliances connected to the appliance plug socket of the machine.**

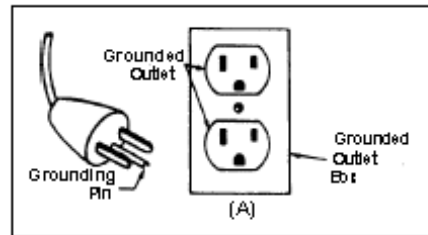


Figure 1

## HOW TO ASSEMBLE THE MACHINE

### CAUTION!

On delivery, the accessories - are lying in the tank and must be removed before the machine is used for the first time.

To assemble the machine, remove the machine top section:

The power cord must not yet be inserted into a plug socket.

1. Open the retaining clamps and lift off the machine top section.
2. Confirm filter is installed and clean.
3. Fit the machine top section back on the tank, and close the retaining clamps.
4. Connect the suction hose. The tank connection enables many suction hoses sizes to be connected to the machine.



## HOW TO PREPARE THE MACHINE FOR OPERATION

### Electrical Connection

The operating voltage shown on the rating plate must correspond to the voltage of the main power supply.

**Ensure that the machine is switched off** and insert the plug of the power cord into a properly installed and fused plug socket with ground.

## MACHINE OPERATION

### Picking Up Dry Substances

Before picking up dry substances, the bag-type filter should always be installed in the tank for best filtration. It is then easy to dispose of the material picked up and the service life of the main filter element is significantly increased. Dry cleaning without bag-type filter is also possible.

### **WARNING: Inflammable substances must not be picked up with the machine!**

After picking up liquids, the filter element is damp. Damp filter elements can clog more quickly when dry substances are picked up. For this reason, the filter element should be dried or replaced before picking up any dry substances.

### Picking Up Liquids

Before picking up liquids, the bag-type filter must always be removed from the tank.

### **WARNING: Inflammable liquids must not be picked up with the machine!**

If foaming is observed, stop work immediately and empty the tank.

### Switching On The Machine

Turn the switches to position "I".

### After Finishing Work

1. Switch off the machine and pull the plug of the power cord out of the plug socket.
2. Wind up the power cord around the handle.

**MACHINE OPERATION**

**Changing The Bag Type Filter**

1. Close the bag-type filter sleeve.
2. Pull the bag-type filter sleeve off the inlet fitting.
3. Dispose of the used bag-type filter in accordance with the local waste disposal regulations.
4. Place a new bag-type filter into the tank as described.

**IMPORTANT!**

**Push the bag-type filter sleeve completely onto the inlet fitting.**

**Replacing The Filter Element**

1. Switch off the machine and pull the plug of the power cord out of the plug socket.
2. Remove the machine top section from the dirt tank and place to one side with the filter element facing upwards.
3. Pull out the filter element .
4. Push in a new filter element.
5. Dispose of the used filter element in accordance with the local waste disposal regulations.

**MAINTENANCE AND REPAIR**

**CAUTION: Before cleaning and servicing the machine, always remove the power cord.**

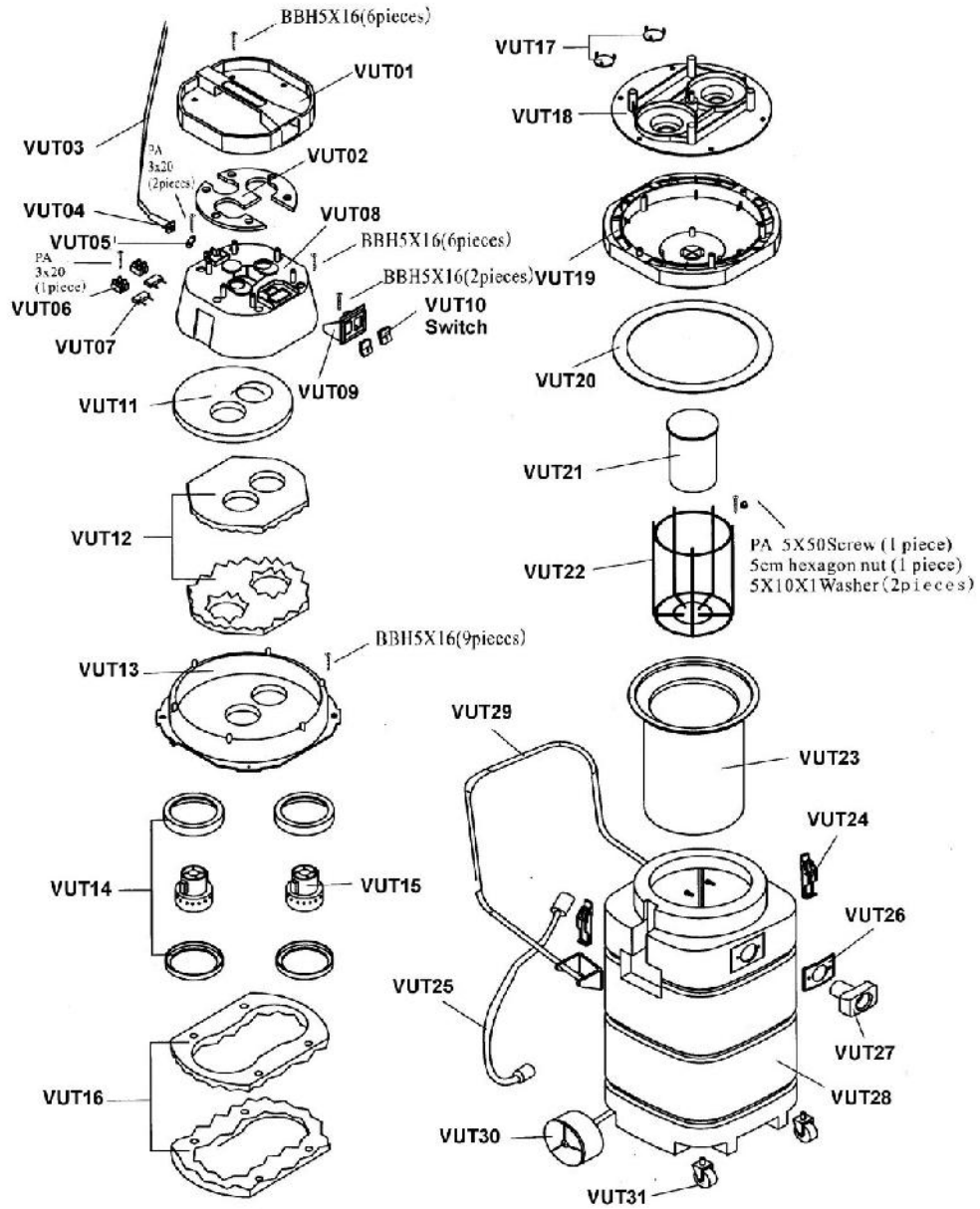
Carry out only maintenance operations described in these operating instructions. Use only original spare parts.

**CAUTION: Do not make any technical modifications to the machine. Your safety could be endangered as a result!**

**For all other maintenance and repair work, please contact an authorized Service department.**

TROUBLESHOOTING		Problem Cause Action
Problem	Cause	Action
<b>Motor does not start.</b>	<ol style="list-style-type: none"> <li>1. The house fuse or plug socket has blown.</li> <li>2. Overload protection switch has tripped.</li> </ol>	<ol style="list-style-type: none"> <li>1. Reset the house fuse</li> <li>2. Allow the machine to cool down approximately 5 minutes; if the machine does not start again automatically, contact the Service Dept.</li> </ol>
<b>Reduced suction power.</b>	<ol style="list-style-type: none"> <li>1. Bag-type filter full.</li> <li>2. Suction hose clogged.</li> <li>3. Filter element clogged.</li> </ol>	<ol style="list-style-type: none"> <li>1. Replace bag-type filter.</li> <li>2. Clean suction hose.</li> <li>3. Clean and replace filter element</li> </ol>
<b>No suction power during wet cleaning.</b>	<ol style="list-style-type: none"> <li>1. Tank full (float switch closing off the suction opening).</li> </ol>	<ol style="list-style-type: none"> <li>1. Empty tank.</li> </ol>

Schematic



**Tools**

- 2 pc wand friction fit 1.5"
- 16" Friction fit floor brush 1.5"
- 16" Friction fit floor brush 1.5"
- Crevice tool 1.5"
- Round Dust brush 1.5"



## U. S. WARRANTY

This Commercial Product is warranted to be free from defects in materials and workmanship under normal use and service for a period of six months from the date of purchase, when operated and maintained in accordance with Maintenance and Operations Instructions. This warranty is extended only to the original purchaser for use of the product. It does not cover normal wear parts such as electrical cable, switches, tools, or motor brushes. If difficulty develops with the product, you should:

(a). Return the complete tool, freight prepaid. Only repair center locations are authorized to make repairs to the product under this warranty. (b). If inspection shows the trouble is caused by defective workmanship or material, we will repair the product and or replace any defective parts without charge within a reasonable time after receipt of the product. This warranty does not apply where: -repairs have been made or attempted by others -repairs are required because of normal wear and tear -the tool has been abused, misused or improperly maintained -alterations have been made to the tool our liability under this warranty is limited to repair of the product and/or replacement of parts and is given to purchaser in lieu of all other remedies, including INCIDENTAL AND CONSEQUENTIAL DAMAGES. THERE ARE NO EXPRESS WARRANTIES OTHER THAN THOSE SPECIFIED HEREIN. THERE ARE NO WARRANTIES WHICH EXTEND BEYOND THE DESCRIPTION OF THE FACE HEREOF. NO WARRANTIES, INCLUDING BUT NOT LIMITED TO WARRANTY OF MECHANICALITY, SHALL BE IMPLIED.