

OPERATING INSTRUCTIONS and PARTS LIST

E.F. 1433-7
R650322

for THE 8" AMERICAN GOLD LINE FLOOR SANDER

MODEL 106-001

MODEL 106-002

MODEL NO. _____

SERIAL NO. _____

Every American floor sander is complete, ready to run, and has been thoroughly tested in our plant before shipping. However, do not attempt to operate it before you have read these instructions carefully. American machines are the most easily operated sanding machines on the market and are capable of producing the highest quality of finish at a very rapid rate. It must be borne in mind that, as with any mechanical device, some practice is necessary in order to gain proficiency in operating these machines. The inexperienced operator should not expect the maximum results the first time he uses the machine, although as this is a professional type lever machine a few passes on the floor will give sufficient understanding to the home-owner renting it to achieve very acceptable results.

LUBRICATION—All rotating bearings, except wheel bearings, in this sanding machine are sealed bearings, meaning that unless the seal is broken the lubricant is good for the life of the bearings.

If such seal should be broken, replacement is made easy, by removing old bearing and installing a new bearing of the same number. By so doing, the same greaseless operation can be continued.

Wheel bearings are needle bearings packed with grease when assembled. These bearings should be inspected and repacked periodically. If machine is in constant use, every 60 days is recommended.

Truck Wheel Bracket Grease Fittings—Lubricate once or twice a month.

Caster Wheel and Swivel Bearings (monthly)—Remove caster wheel by taking single nut off axle bolt, wiping the axle tube and wheel hole with clean cloth and lubricate wheel bore with two or three drops of #10 oil. To lubricate swivel bearing, remove caster assembly from the machine by taking out the four hex head screws and wash the swivel bearings and races thoroughly with clean kerosene or similar solvent. Shake or blow out solvent and dirt, then apply grease to walls with a small stiff wire, swivelling caster to carry the grease over the entire race.

It is a good policy to take your machine to one of our numerous sales and service representatives once or twice a year for complete lubrication and inspection by factory trained mechanics. They will go over the entire machine and can provide and replace any worn parts such as grease seals, bearings, drum pad, etc.

CARE OF "V" BELT—The "V" belt requires very little attention other than an occasional inspection to

make sure that it has not stretched, allowing it to slip in the grooved pulleys. Proper belt tightness will be maintained through useful life of belt by spring loaded Idler Arm Assembly (Key No. 141). Do not attempt to adjust Assembly. If belt tension is too little for proper operation, replace belt. To replace belt, remove the Belt Guard and simply slip the belt off the pulleys. *Replace the Belt Guard before operating machine.*

DUST COLLECTOR—The dust collection system is of simple and efficient design. It consists of dust pan, fan housing, fan, removable discharge pipe and dust bag. The dust pan is quickly detachable for cleanout purposes by removing the two round head screws, with washer and spring, key number 38, one through the lug at each end of the dust pan, holding the pan against the drum and rotating it with the drum until it is out of the frame. Pan should be replaced in a similar manner—hold pan against drum and rotate until pan is in its correct location and replace the two screws with their washers and springs. The discharge pipe is readily removable from the frame by twisting and pulling up. The dust collecting system is very efficient in operation and to keep it operating at maximum efficiency, the dust bag should be emptied when it becomes about $\frac{1}{2}$ full.

CONTROL LEVER—The control lever at the upper end of the handle plays an important part in the operation of the machine. It is used at the end of each cut to raise and lower the drum from the floor. There is nothing to be gained by "crowding" the machine by applying additional pressure with the control lever, as the machine is designed to produce the maximum amount of work in a steady run and the motor is amply powerful to give full capacity of the machine. Never allow the sanding drum to rest on the floor while the machine is not in use. It will cause the drum pad to become flattened and affect the perfect working of the machine. Always leave the control lever in its upper position to hold sanding drum off the floor when the machine is not in use.

ABRASIVE PAPER—Cut sheets of abrasive paper are to be used with this machine. American Super Speed supplied in grits ranging from #2/0-100 to #3 $\frac{1}{2}$ -20 for the Rental Floor Sander will cover all the conditions encountered. The American Super Speed abrasive is also peculiarly adapted to this machine and the combination will enable the user to obtain the best finish in the least time with the minimum cost.

SECURING ABRASIVE PAPER TO DRUM—Forming Paper—Each end of the abrasive sheet must be formed before installing it on the drum. To do this, the end of the sheet, grit side toward machine, is placed in the Folding Fixture, key number 8 located on the front of the motor. The sheet is then bent back until it makes a right

AMERICAN-LINCOLN

500 SOUTH ST. CLAIR STREET . TOLEDO, OHIO 43603

angle with the end in the Fixture and lightly creased. Turn the paper end for end and form the other end in a similar manner.

Machine must be disconnected from power source. Facing machine, paper clamps turned to show grooves right angles to drum slot, indicating open clamp. Wrap paper closely around drum, insert ends, previously formed in folding fixture on machine front, in drum slot. While holding drum against the floor to prevent rotation, turn left clamp up until groove is parallel with drum slot, then turn right clamp down, drawing paper taut and closing clamp. To remove paper, reverse the clamping motion, turning the right clamp up and the left clamp down until the grooves are at right angles to drum slot.

ELECTRICAL CONNECTIONS - Check the power source as it must agree with the voltage etc., shown under "Motor Specifications" on the motor end plate. Before connecting the machine to the power be sure that the machine switch is in the "OFF" (up) position and the Sanding Drum is off the floor by having the control lever locked in the up position. This machine should be connected to an appliance outlet fused at 25 or 30 amps. The trailing wire connector is the three prong safety type. In the United States only, if the proper grounded receptacle is not available, use the adapter furnished with the machine. Be sure to ground the green wire on the adapter under one of the screws of a grounded outlet. If no grounded outlet is available, attach the green wire on the adapter to a grounded metal stake, pipe or wire. (This does not apply to Canada as no adapter is supplied).

TRAILING WIRE - We supply with each machine a heavy grease and oil proof trailing wire. American High Quality Trailing Wire is composed of three conductors of fine stranded copper wire, each strand being seamless rubber insulated and reinforced with a cotton braid of distinguishable colors to determine polarity. These three strands are then inbedded in a rubber casting, giving the cable the appearance of a single wire. It is kink, oil and curl proof and consequently of long service. Its feature of pliability enables one to recoil it quickly and without injury, and it also follows the machine easily.

OPERATION - Machine switch must be OFF and control lever in up position with drum raised from floor. Connect machine to proper voltage as shown under motor specifications. Start machine motor, lower drum to floor gently while moving machine slowly ahead. At the end of the forward cut, the sanding drum must be raised clear of the floor before the machine comes to a standstill. To start the backward cut, the machine must again be in motion as the drum is lowered to contact the floor. If the machine were allowed to come to a standstill with the drum running in contact with the floor, a deep groove would result at this point. While the machine is operating with the drum on the floor, the right hand may be removed from the control lever and used on the steering handle to better control the machine. The trailing wire must also be watched and kept out of the way of the operator and the machine. Keep the machine moving by walking slowly forward, taking short steps and keeping your feet close to the machine.

EMPTY the dust bag frequently. Poor dust pick-up will result from an over filled or clogged bag. After using the machine the dust bag *must* be emptied and not allowed to stand over night unless empty because of the fire hazard.

DRUM LEVELING - This machine is equipped with a new improved dual drum leveling device. If due to wear of the drum pad or for any other reason, the drum cuts heavier on one side than on the other, the drum may be leveled as follows:

Each truck wheel is mounted on an eccentric axle. The axles are held in place by nuts, key number 125, on the inside of the wheel bracket. Leveling of the drum is accomplished by loosening one nut and turning the eccentric axle, with a screw driver which raises or lowers one truck wheel with respect to the other wheel. If sufficient adjustment cannot be obtained by adjusting one wheel, follow same procedure with other wheel. By means of this adjustment the drum may be made to contact the floor equally along the entire width of the cut. Then tighten the nuts while holding the eccentric axles in place with a screw driver.

DETACHABLE HANDLE AND DUST PIPE - Portability is a feature of the 8" Gold Line American Sander. To simplify carrying the machine in a passenger car or up and down stairs the steering handle and dust pipe may be easily removed.

The dust pipe, key number 76, may be withdrawn from the machine with a lifting and twisting motion. The steering handle, key number 53, requires that the trailing wire be disconnected from the handle, the connector at the lower end of the handle removed from the machine, the latch, key number 124 at the lower end of the control rod disconnected and the hand knob, key number 54 at the rear of the machine unscrewed about one-quarter inch which will allow the steering handle to be completely removed from the machine. Reverse these operations to replace the handle.

The machine may be picked up by the handles, the chrome handle at the front and the hand space above the rear casters.

CAUTION - It is wise to observe the following "Cautions".

To prevent accidental starting of machine, make sure toggle switch is in "OFF" position before connecting cord to electrical supply.

Do not fail to raise the drum from the floor at the end of each cut before the machine comes to a standstill.

Always keep drum off the floor when machine is not in use. Take short steps when operating the machine.

Use American Super Speed paper for sanding drum. For the benefit of our machine owners we supply a high quality abrasive paper at a reasonable price - send for price list.

Clean the treads of the truck wheels and caster from time to time to prevent them from causing the drum to cut waves into the floor.

If you blow a fuse in starting the machine, replace it with a fuse of 30 ampere capacity.

Never place weights on your machine to increase the drum pressure. The maximum drum pressure is carefully determined at the factory. Exceeding this pressure will not increase the capacity and is liable to overheat the motor.

Use an American Spinner for a perfect job on the edges of the floor. We furnish circulars, stuffers and cuts to assist our machine owners in stimulating business. Write for particulars.

An especially designed 1½ H.P. Peerless brushless type motor, with a rotor that cannot burn out, insures top performance. When operated on current specified, we will replace absolutely free of material and labor charges any motor that burns out within five years. This is the strongest warranty ever made on a rental floor sander. In addition, the entire machine is warranted for a period of

one year against defects in material and workmanship.

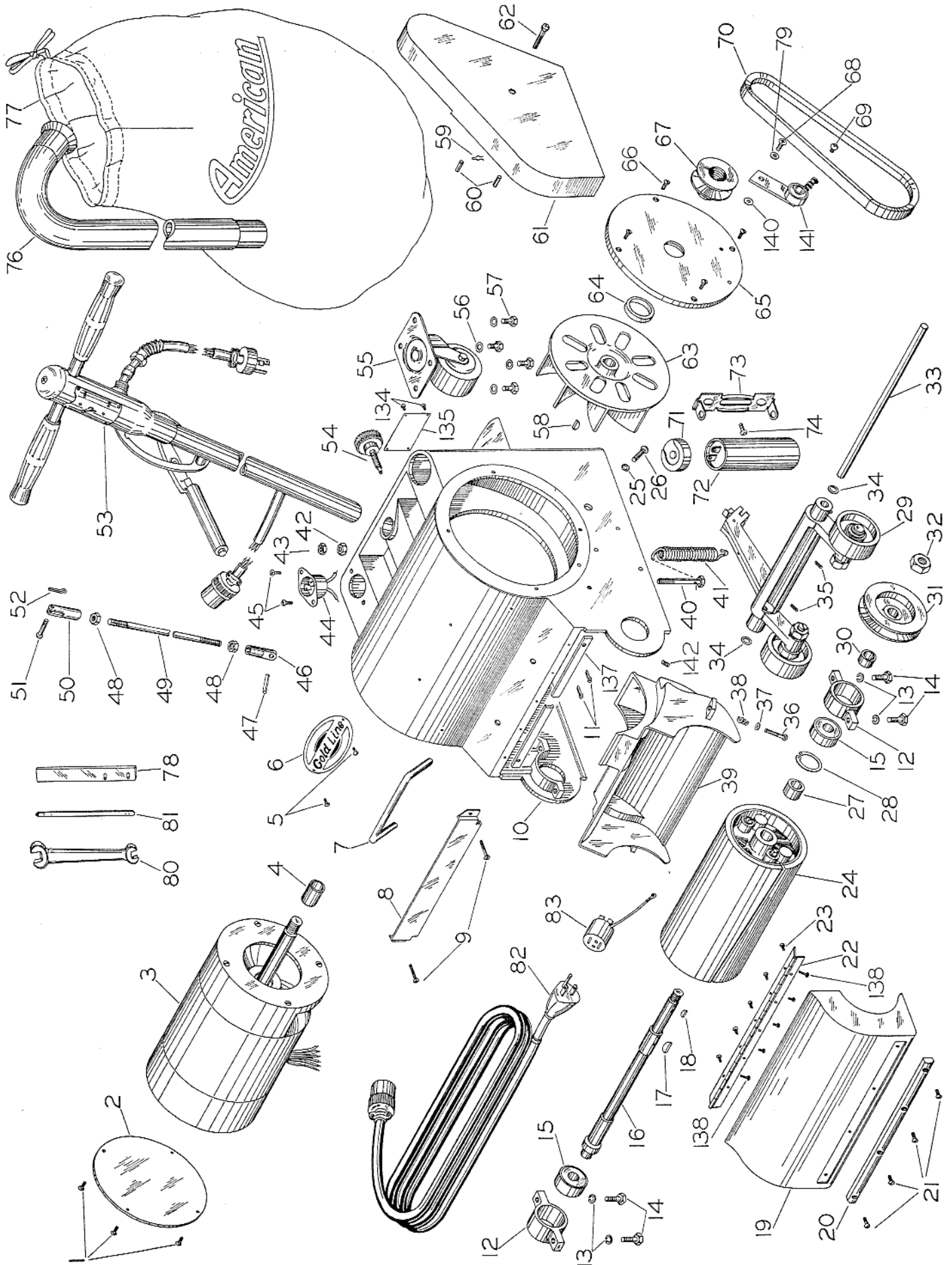
For guaranteed servicing or inspections always take your American machines to your local authorized American-Lincoln Sales and Service Warehouse or wire the factory giving us the serial and model numbers.

8" AMERICAN GOLD LINE FLOOR SANDER PARTS LIST

Model 106-001 (60 Cycle - 115 V) Model 106-002 (50 Cycle - 115 V)

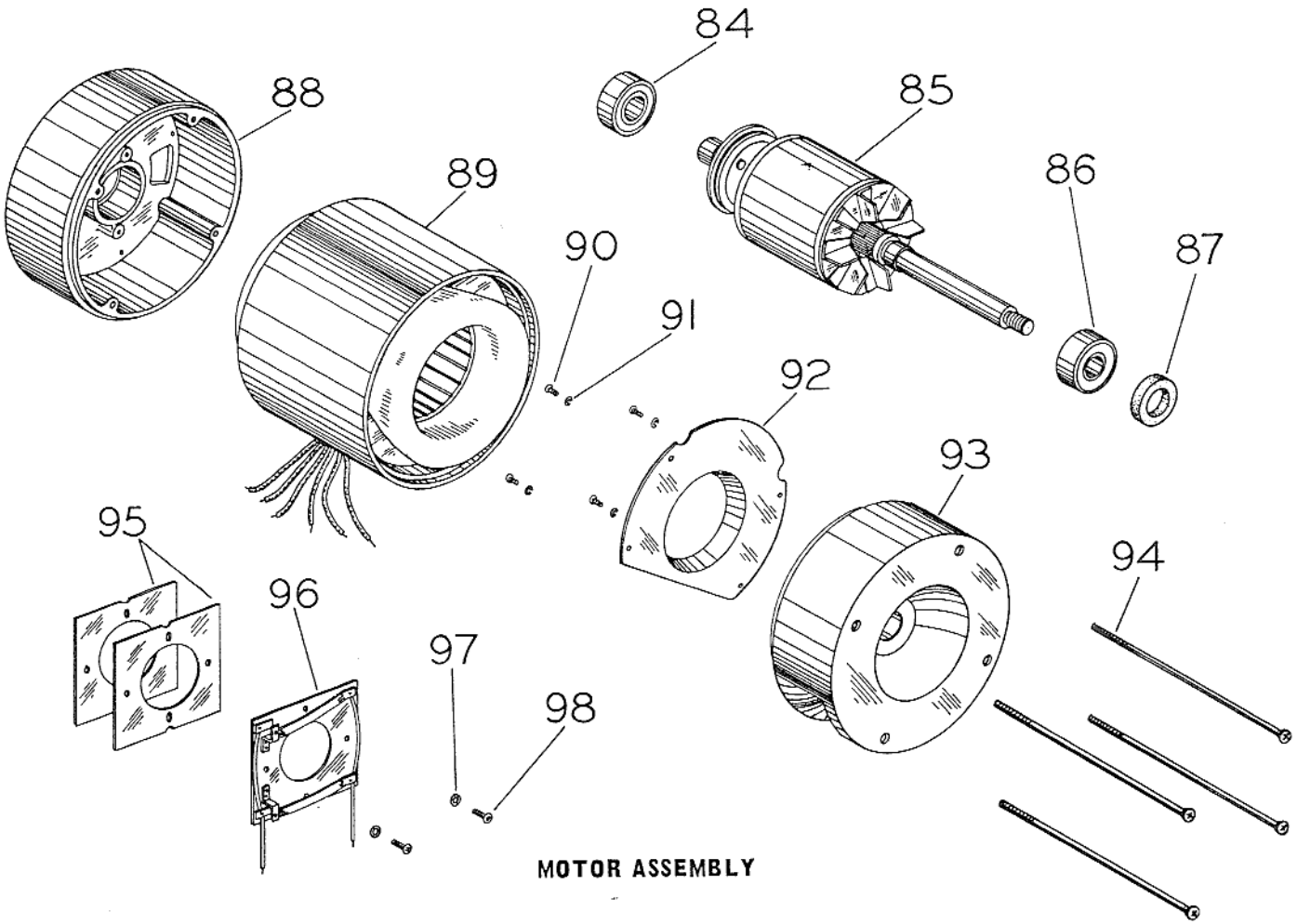
DO NOT USE KEY NUMBERS WHEN ORDERING REPAIR PARTS. ALWAYS USE PART NUMBERS.

KEY NO.	PART NO.	DESCRIPTION	KEY NO.	PART NO.	DESCRIPTION
1.	2-00-0375	Screw - 6-32 x 5/16 Lg. Rd. Hd. (4 Req'd)	49.	2-10-1660	Control Rod
2.	2-10-1697	Instruction Plate (Model 106-01)	50.	1-10-0650	Control Rod Fork
	2-10-1890	Instruction Plate (Model 106-02)	51.	2-10-0651	Control Rod Fork Pin
3.	0106-12	Motor Assembly (Model 106-01)	52.	2-00-0771	Cotter Pin
	0106-28	Motor Assembly (Model 106-02)	53.	0106-01	Handle Assembly Complete
4.	1-10-1682	Fan Spacer	54.	0106-11	Hand Knob Assembly
5.	2-00-0297	Drive Screw - Nameplate .114 D x 3/16 Lg. (2 Req'd)	55.	2-00-1673	Caster
6.	2-22-1231	Nameplate	56.	2-00-0419	Washer - 5/8 O.D., 21/64 I.D., 1/2 Th. (4 Req'd)
7.	2-10-1658	Lift Handle	57.	2-00-0224	Screw - 5/16-18 x 1/2 Lg. Hex. Hd. (4 Req'd)
8.	2-10-1657	Paper Bender	58.	2-00-0718	Woodruff Key
9.	2-00-0043	Screw - 8-32 x 1/4 Lg. Rd. Hd. (2 Req'd)	59.	2-00-1125	Cotter Hair Pin
10.	1-10-1652-1	Frame	60.	2-00-0875	Roll Pin - 1/4 D x 5/8 Lg. (2 Req'd)
11.	2-00-0771	Cotter Pin (2 Req'd)	61.	1-10-1659	Belt Guard
12.	1-10-1885	Drum Shaft Bearing Housing (2 Req'd)	62.	2-00-1593	Screw - 1/4-20 x 1/4 Lg. Fillister Hd.
13.	2-00-0521	Washer - 5/16 (4 Req'd)	63.	1-10-1650	Suction Fan
14.	2-00-0206	Screw - 5/16-18 x 1 Lg. Hex. Hd. Cap (4 Req'd)	64.	2-10-1654	Fan Seal
15.	2-00-1166	Bearing (2 Req'd)	65.	1-10-1640-1	Fan Cover
16.	1-10-1667	Drum Shaft	66.	2-00-0002	Screw - 10-24 x 3/8 Flat Hd. (4 Req'd)
17.	2-00-0718	Woodruff Key	67.	2-10-2307-1	Adjusting Pulley Hub
18.	2-00-0731	Woodruff Key	68.	2-00-0022	Screw - 5/16-24 x 3/8 Lg. Fl. Hd.
19.	1-10-1665	Drum Guard	69.	2-00-1092	Screw #10-24 x 3/8 Lg. Self Tap
20.	0106-18	Front Bumper Assembly	70.	2-00-03760	V Belt
21.	2-00-0036	Screw - 10-24 x 1/4 Rd. Hd. (4 Req'd)	71.	1-10-1930	Capacitor End Cap
22.	2-10-1666	Drum Guard Hinge	72.	2-00-1019	Capacitor
23.	2-00-1659	Screw - 6-32 x 1/4 Flat Hd. (8 Req'd)	73.	2-00-1027	Capacitor Bracket
24.	0106-31	Drum Assembly	74.	2-00-0001	Screw - 1/4-20 x 1/2 Lg. Rd. Hd.
25.	2-00-0498	Lockwasher - External	75.	2-00-0529	Lockwasher (2 Req'd)
26.	2-00-0081	Screw - 1/4-20 x 1 Lg. Rd. Hd.	76.	2-10-1698	Discharge Pipe
27.	1-10-1685	Spacer	77.	0106-14	Dust Bag
28.	2-00-0535	Lock Ring	78.	0106-25	Pulley Wrench
29.	0106-09	Elevating Bracket & Wheels Assembly	79.	2-14-02836	Switch Guard
30.	1-10-1681	Spacer	80.	2-10-1106	End Wrench (2 Req'd)
31.	1-10-0508	Drum Pulley	81.	2-40-0529	Key Strap
32.	2-00-0616	Nut - 5/8-18 Hex. Jam	82.	0106-15	Trailing Wire Assembly
33.	1-10-1639	Axle - Elevating Bracket		2-00-0925	Plug
34.	2-00-0405	Washer - 1 1/8 O.D., 17/32 I.D., 3/32 Th. (2 Req'd)	83.	2-00-1307	Trailing Wire Adapter (Not Acceptable in Canada)
35.	2-00-0256	Set Screw - Wheel Axle 1/4-20 x 3/8 Lg. Set (2 Req'd)	84.	2-00-1140	Bearing
36.	2-00-0102	Screw - 1/4-20 x 1 1/2 Lg. Rd. Hd. (2 Req'd)	85.	2-00-1677	Armature Assembly (Model 106-01)
37.	2-00-0407	Washer - 9/16 O.D., 17/64 I.D., 1/16 Th. (2 Req'd)		2-10-1892	Armature Assembly (Model 106-02)
38.	2-10-1655	Dust Pan Spring (2 Req'd)	86.	2-00-1139	Bearing
39.	1-10-1656	Dust Pan	87.	2-10-1678	Bearing Seal
40.	1-10-1931	Adjusting Screw - 5/16-18 x 2 1/2 Lg. Hex Hd.	88.	1-10-1676	Motor Cover - R.H.
41.	2-10-1669	Drum Adjustment Spring	89.	1-10-1688	Field Assembly (Model 106-01)
42.	2-00-0585	Hex Nut		2-10-1895	Centrifugal Switch (Model 106-01)
43.	2-00-0586	Hex Jam Nut		2-10-1891	Field Assembly (Model 106-02)
44.	0105-22	Supply Lead Assembly		2-10-1894	Centrifugal Switch (Model 106-02)
	2-00-0908	Male Plug	90.	2-00-0042	Screw - 8-32 x 1/4 Lg. Rd. Hd. (4 Req'd)
45.	2-00-0366	Screw - 10-24 x 3/8 Lg. Rd. Hd. (2 Req'd)	91.	2-00-0529	Lockwasher - #8 (4 Req'd)
46.	2-10-1661	Elevating Bracket Yoke	92.	2-10-0525	Baffle Plate
47.	2-00-1679	Roll Pin	93.	1-10-1675	Motor Cover L.H.
48.	2-00-0593	Nut - 3/8-16 Heavy Jam (2 Req'd)	94.	2-00-0172	Screw - 10-24 x 6 7/8 Lg. Oval Hd. (4 Req'd)
			95.	2-10-1702	Stationary Switch Insulator (2 Req'd)
			96.	2-10-1706	Stationary Switch with Leads
			97.	2-00-0506	Lockwasher #8 - Internal (2 Req'd)
			98.	2-00-0045	Screw - 8-32 x 3/8 Lg. Rd. Hd. (2 Req'd)
			99.	2-00-1962	Screw - Handle Pipe Cap - 1/4-20 x 1 Lg. Oval Hd.

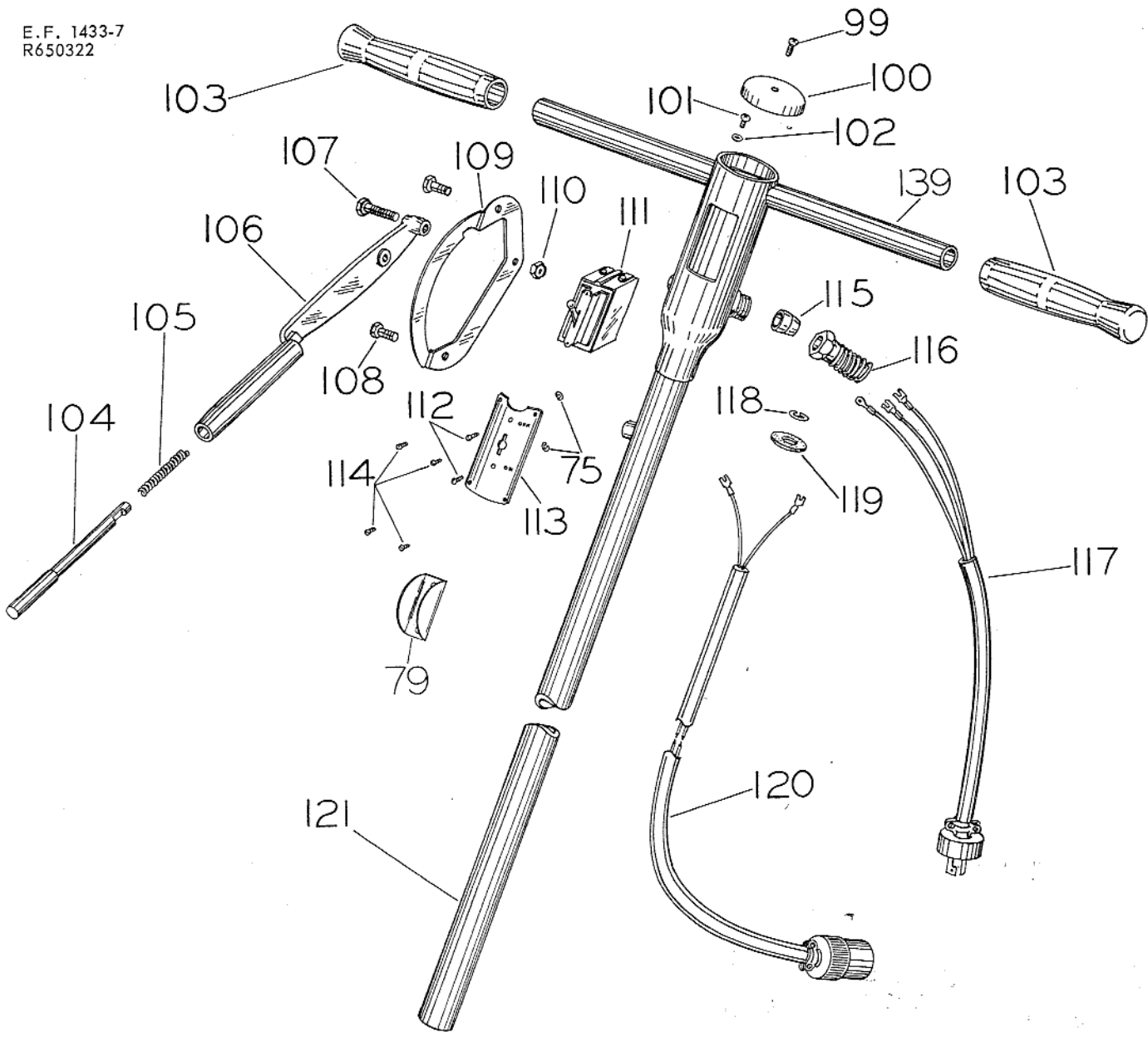


PARTS LIST continued

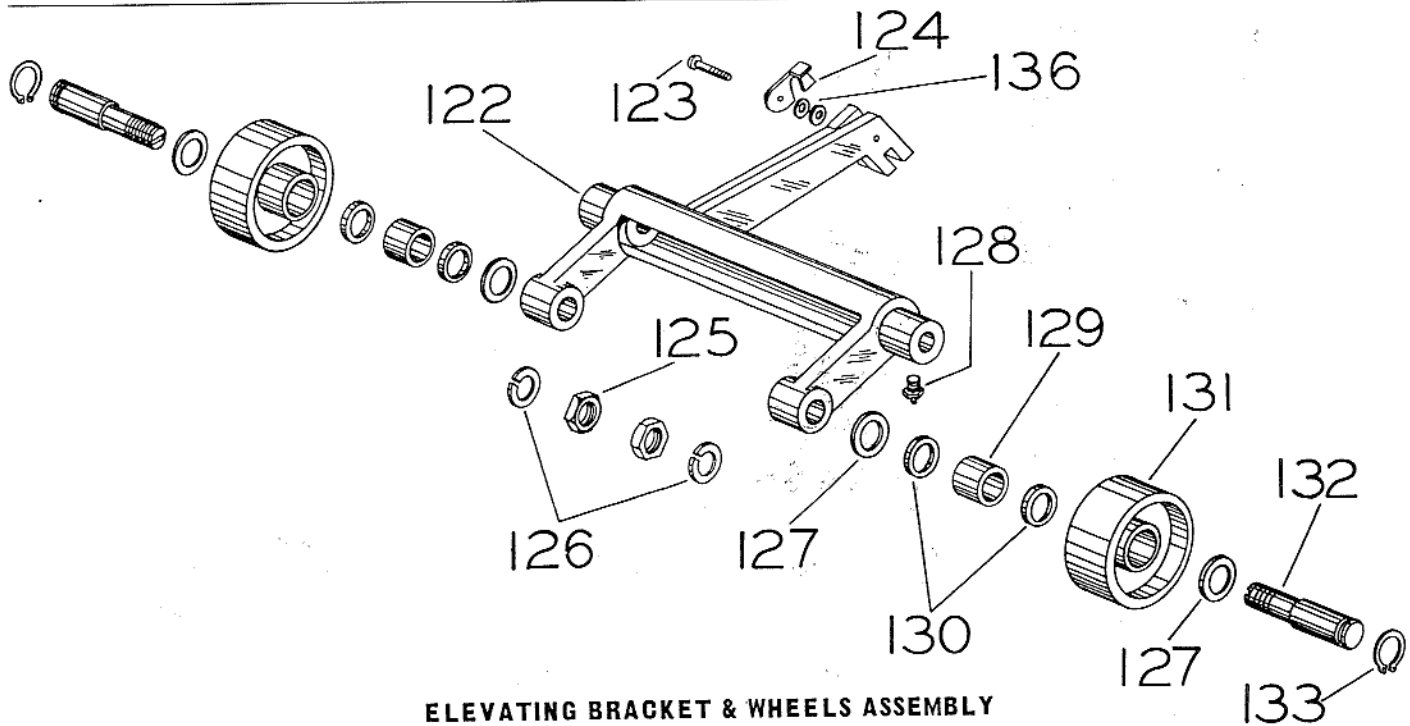
KEY NO.	PART NO.	DESCRIPTION	KEY NO.	PART NO.	DESCRIPTION
100.	1-14-0615	Handle Pipe Cap	120.	0106-16	Switch Lead Wire Assembly
101.	2-00-0106	Screw - Ground - 8-32 x 3/8 Lg. Rd. Hd.	122.	2-00-0923	Female Plug
102.	2-00-0507	Lockwasher - Ground #8 Internal	123.	2-00-0840	Terminal (2 Req'd)
103.	2-10-1695	Handle Grip (2 Req'd)	121.	0106-02	Handle Pipe Sub Assembly
104.	1-10-0648	Stop Pin	122.	1-10-1671	Elevating Bracket
105.	2-10-1561	Stop Spring	123.	2-00-1661	Lock Screw - 10-24 x 3/4 Lg. Rd. Hd.
106.	1-10-0646	Control Handle	124.	2-10-1672	Lift Rod Lock
107.	2-00-0207	Screw - Quadrant - 5/16-18 x 1 1/4 Lg. Hex. Hd.	125.	2-00-1672	Axle Nut - 5/8 x 11 Jam (2 Req'd)
108.	2-00-0224	Screw - Quadrant - 5/16-18 x 1/2 Lg. Hex. Hd. (2 Req'd)	126.	2-00-0526	Lockwasher - 5/8 (2 Req'd)
109.	2-10-0894	Quadrant	127.	2-10-1496	Washer (4 Req'd)
110.	2-00-0585	Nut - Quadrant - 5/16-18 Reg.	128.	2-00-0566	Grease Fitting (2 Req'd)
111.	2-00-1001	Switch	129.	2-00-1204	Wheel Bearing (2 Req'd)
112.	2-00-0085	Screw - Switch - 8-32 x 3/4 Rd. Hd. (2 Req'd)	130.	2-10-1560	Grease Retainer (4 Req'd)
113.	2-14-0617	Switch Cover Plate	131.	1-10-1559	Wheel (2 Req'd)
114.	2-00-0375	Screw - Switch Cover 6-32 x 5/16 Lg. Rd. Hd. (4 Req'd)	132.	2-10-1673	Wheel Axle (2 Req'd)
115.	2-00-0953	Compression Sleeve	133.	2-00-0540	Retaining Ring (2 Req'd)
116.	2-00-0954	Spring Guard with Shell	134.	2-00-0294	Drive Screw (4 Req'd)
117.	0106-17	Switch Trailing Wire Assembly	135.	2-10-1943	Instruction Plate
	2-00-0912	Male Plug	136.	2-00-1508	Washer (2 Req'd)
	2-00-0827	Terminal	137.	1-10-2293	Rub Strip
	2-00-0840	Terminal (2 Req'd)	138.	2-00-1480	Screw #6-32 x 1/2" Lg. Flat Hd. (2 Req'd)
118.	2-00-1308	Hog Ring	139.	2-14-1927	Handle Grip Shaft
119.	2-00-1684	Fibre Washer - 1 5/4 O.D., 9/16 I.D., 3/32 Th.	140.	2-40-0395	Washer - Idler Arm
			141.	0106-51-1	Idler Arm Assembly
			142.	2-00-0256	Set Screw - 1/4-20 x 3/8 Lg. Sock. Cup. Pt.



MOTOR ASSEMBLY



HANDLE ASSEMBLY COMPLETE



ELEVATING BRACKET & WHEELS ASSEMBLY