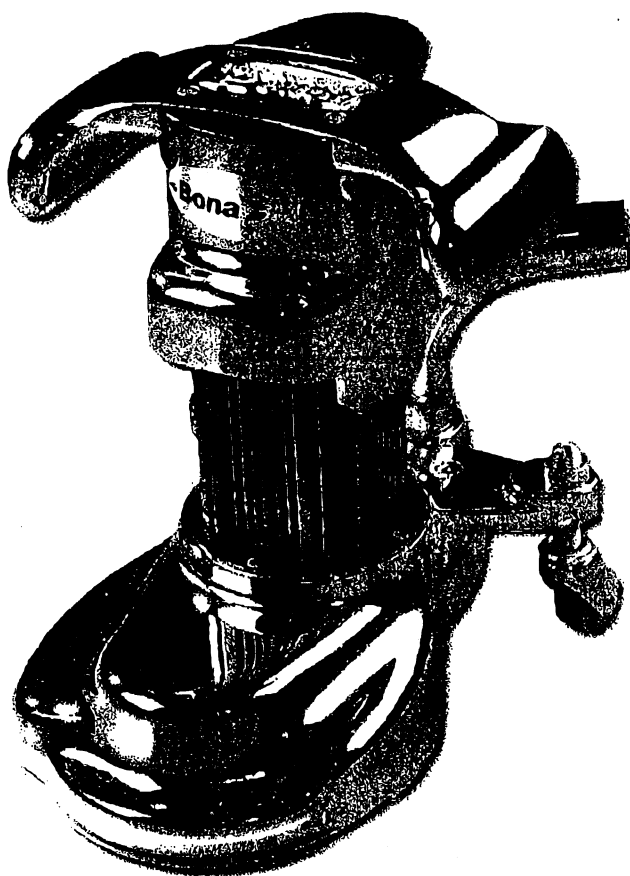


**Bona** 

# AdvantEdge



## Owner's Manual and Floor Sanding Guide

### Read This Book

This book has important information for the use and safe operation of this machine. Failure to read this book prior to operating or attempting any service or maintenance procedure to your Bona® sanding machine could result in injury to you or to other personnel; damage to the machine or to other property could occur as well. You must have training in the operation of this machine before using it. If you or your operator(s) cannot read English, have this manual explained fully before attempting to operate this machine.

Si Ud. o sus operadores no pueden leer el inglés, el contenido completo de este manual será explicado antes de intentar operación de esta máquina.

All directions given in this book are as seen from the operator's position at the rear of the machine.

## INTRODUCTION

The Bona® AdvantEdge is a professional, precision, edging tool that has been specially adapted with an exhaust hose fitting allowing it to be connected to any of the Bona DCS® vacuums. It has been fitted with a custom dust trap underplate and a containment brush to provide virtually dust-free sanding when used in conjunction with a Bona DCS® vacuum. The heavy-duty, rugged construction and balanced, gear-drive system provides floor sanding professionals with quality, reliable floor edging technology. Each feature of this tool utilizes the latest technology available, resulting in the optimum floor edging machine for most floor sanding applications.

### Specifications:

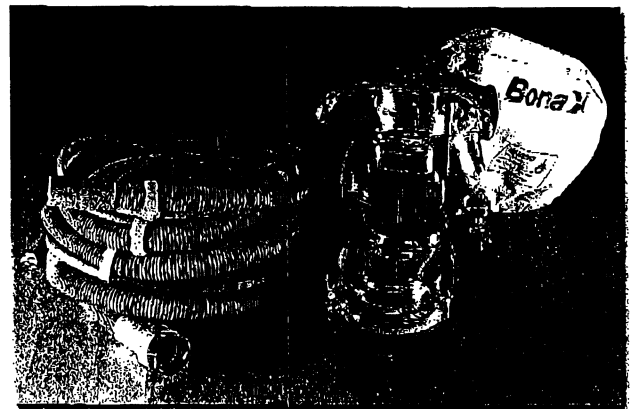
- ❖ 115 V 2.4 HP motor
- ❖ Advanced motor technology—no brushes to change; minimal maintenance
- ❖ 7" diameter sand disc—flat, aggressive cutting
- ❖ 3,200 RPM disc speed
- ❖ Belt driven—no gears, no grease, less noise
- ❖ 25 ft. non-marking 12/3 electrical cord
- ❖ Halogen operating light—better visibility
- ❖ Non-marking wall guard—protects cabinets and base
- ❖ Superior dust collection
- ❖ Ergonomic handle
- ❖ Accesses toe kicks
- ❖ Smooth action—compound wheels travel smoothly
- ❖ 27 lbs. net weight
- ❖ 1-year warranty against factory defects

## CONTENTS

SUBJECT	PAGE
OPERATOR SAFETY INSTRUCTIONS	3-4
ABOUT THE ADVANTEDGE AND HOW IT WORKS	5-6
PARTS LIST	7
EXPLODED VIEW	8
PREVENTATIVE MAINTENANCE	9

Date of Purchase \_\_\_\_/\_\_\_\_/\_\_\_\_

Serial Number \_\_\_\_\_



The AdvantEdge can be used with DCS® or as a bag edger.

## OPERATOR SAFETY INSTRUCTIONS

**DANGER**

**DANGER** means: Severe bodily injury or death can occur to you or other personnel if the **DANGER** statements found on this machine or in this Owner's Manual are ignored or are not adhered to. Read this entire manual before operating this machine.

**WARNING**

**WARNING** means: Injury can occur to you or to other personnel if the **WARNING** statements found on this machine or in this Owner's Manual are ignored or are not adhered to. Damage to the machine or to other property may occur as well, if the **WARNING** is ignored.

**NOTE:** The reading and understanding of this Owner's Manual is imperative prior to operating this machine. If you or your operator(s) cannot read English, have this manual explained fully before attempting to operate this machine. Si Ud. o sus operadores no pueden leer el inglés, el contenido completo de este manual será explicado antes de intentar operacion de esta máquina.

**DANGER**

Sanding/finishing wood floors can create an environment that can be explosive. The following safety procedures must be adhered to:

- ✓ Cigarette lighters, pilot lights, and any other sources of ignition can create an explosion when active during a sanding session. All sources of ignition should be extinguished or removed entirely, if possible, from the work area.
- ✓ Work areas that are poorly ventilated can create an explosive environment when certain combustible materials are in the atmosphere; i.e., solvents, thinners, alcohol, fuels, certain finishes, wood dust and other combustible materials. Floor sanding machines can cause flammable material and vapors to burn. Read the manufacturer's label on all chemicals being used to determine combustibility. Keep the work area well ventilated.
- ✓ Hitting a nail while sanding can cause sparks and create an explosion or fire. Always use a hammer and punch to countersink all nails before sanding floors.

Operating a machine that is not completely or fully assembled could result in injury or property damage. Do not operate this machine until it is completely assembled. Keep all fasteners tight. Keep adjustments according to machine specifications.

**DANGER**

Electrocution could occur if the machine is used on a power circuit that repeatedly trips or is undersized. Have a licensed electrician check the fuse, breaker, or power supply.

**DANGER**

Electrocution could occur if maintenance and repairs are performed on a unit that is not properly disconnected from the power source. Disconnect the machine from all power.

**DANGER**

Electrocution could occur if the machine is used on an ungrounded electrical circuit. **Never remove or disable the grounding supply conductor on the electrical cord. Consult an electrician if the grounding conductor is missing or if you suspect your circuit is not grounded properly.**

## OPERATOR SAFETY INSTRUCTIONS (CONT.)

**DANGER**

Use of this machine with a damaged power cord could result in an electric shock. Do not use the cord to pull the machine.

**DANGER**

Electrocution or injury could occur if the power cord is run over and damaged by the edger. Keep the cord from contact with the sanding disc. Always lift the cord over the machine and sand away from the cord.

**DANGER**

Moving parts on this machine can cause serious injury and/or damage. Keep hands, feet, and loose clothing away from all moving parts of the edger.

**DANGER**

Operating an edger without all guards in place can cause an injury or damage.

**DANGER**

Injury to the operator or bystanders could occur if the machine's power is on while performing maintenance.

Airborne sanding dust should not be breathed in while operating an edger. Always wear a dust respirator while operating sanding equipment.

Injury to the eyes and/or body can occur if protective clothing and/or equipment is not worn while sanding. Always wear safety goggles, protective clothing, ear protection, and a dust mask while sanding. Exposure to high noise levels can cause hearing loss or impairment. Wear OSHA-approved hearing protection (earmuffs) when using this equipment.

Bodily injury could occur if power is applied to the machine with the power switch already in the "ON" position. Always check to assure the power switch is "OFF" before connecting the machine to its power source.

Maintenance and repairs performed by unauthorized personnel could result in damage or injury. Maintenance and repairs performed by unauthorized personnel will void your warranty. Servicing of this unit must always be referred to an authorized Bona® Machines Dealer.

Use of this machine to move other objects or to climb on could result in an injury or damage. Do not use this machine as a step or furniture. Do not ride on this machine.

Damage could occur to this machine if not properly kept in a dry storage area.

Serious damage to the floor can occur if the machine is left running in one spot while the sanding disc is in contact with the floor.

# ABOUT THE ADVANTEDGE EDGER AND HOW IT WORKS

## HELPFUL HINTS

1. Store machine in dry place.
2. Do not drop machine. Dropping machine on the wheels or disc from any height may damage any or all of these parts rendering the machine unusable or unsatisfactory in its performance.
3. Make sure edger power switch is in the "OFF" position before plugging into power source.
4. Allow only authorized repair personnel to repair or service this machine.
5. Check adjustments on the machine daily; listen for changes in the sound your machine makes while running free and under a load. These changes often provide early warnings of bearings wearing out. Timely service may prevent serious parts damage and unnecessary repair costs.
6. Do not stand on the machine.
7. Blow dust out of machine after every job to avoid dust buildup which can shorten the life of the machine or its components.

## VOLTAGE

Use only 110V power as indicated on nameplate. Be sure power switch is in the "OFF" position before plugging into the power source. Use of supply voltage other than that specified may cause motor damage. NOTE: LOW VOLTAGE, AS WELL AS HIGH VOLTAGE, MAY CAUSE SERIOUS DAMAGE TO ELECTRICAL PARTS.

## STARTING

Tilt your machine back so the sanding disc is off the floor and switch to "ON". To sand, tilt the machine forward to allow the sanding disc to make contact with the floor keeping the machine moving at all times. The weight of your machine is carefully balanced to produce maximum results without asserting additional pressure. Applying additional pressure to the sanding disc may cause damage or excess wear to the motor and sanding disc.

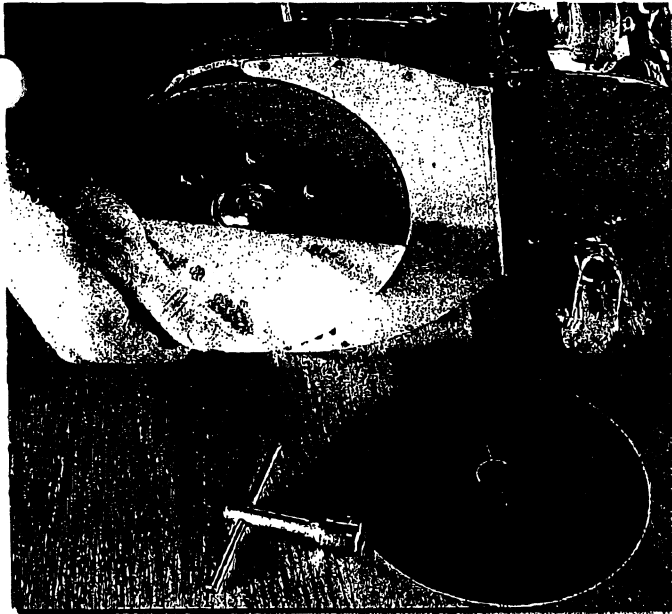
## LUBRICATION

The bearings used in the Bona® AdvantEdge Edger are permanent and do not require additional grease during their life. Bearings should be checked for damage or wear when excess bearing noise is detected.

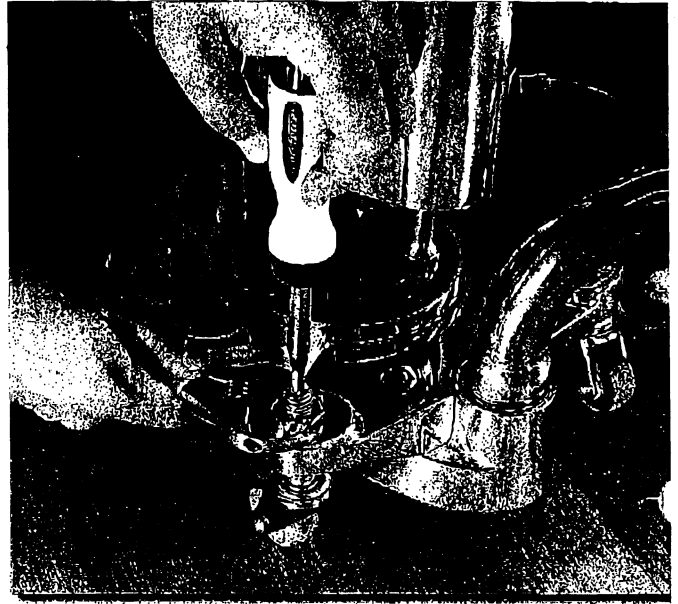
The edger should be serviced and totally cleaned at least twice a year.

## DISC PAD

The edger is factory-set to cut on the front right corner of the sanding disc (from 12:00 to 2:00 on the clock face) about 1-1/2" from the front edge back to center. The Bona® AdvantEdge edger, as with most edgers, is designed to cut this way to optimize the cutting dynamics of the sanding disc and dust pick-up of the edger chassis. When adjustments for this are necessary, simply loosen the lock nut on the caster assembly and raise or lower the chassis by using a plain-end screwdriver on the slotted threadbolt. When adjustment is complete, re-tighten the lock nut.

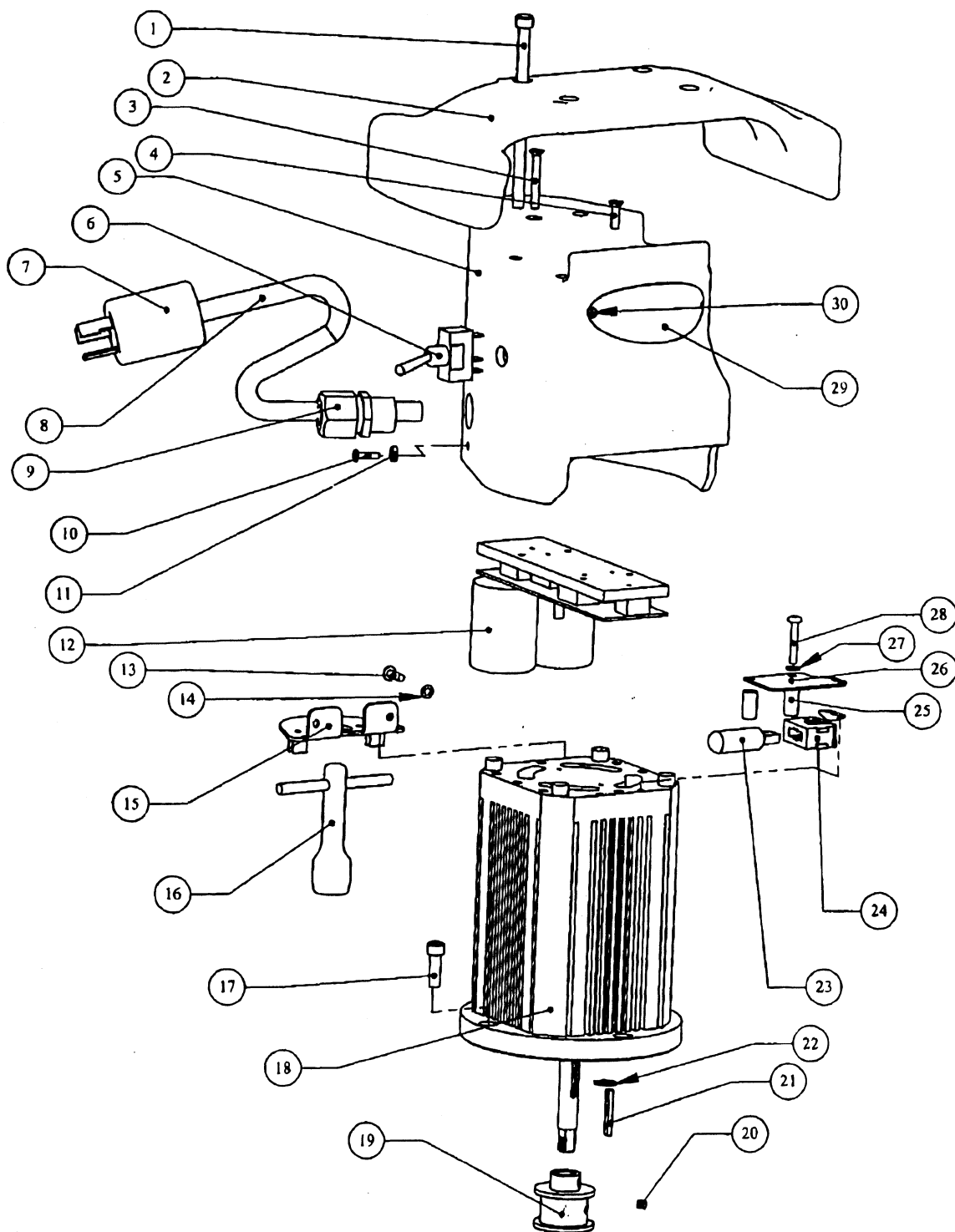


The AdvantEdge can be used with Bona sifast edger paper or bolt on 7x7/8 edger paper.



Wheel adjustments are simple on the AdvantEdge (see above for specifics).

## ADVANTEDGE EXPLODED VIEW



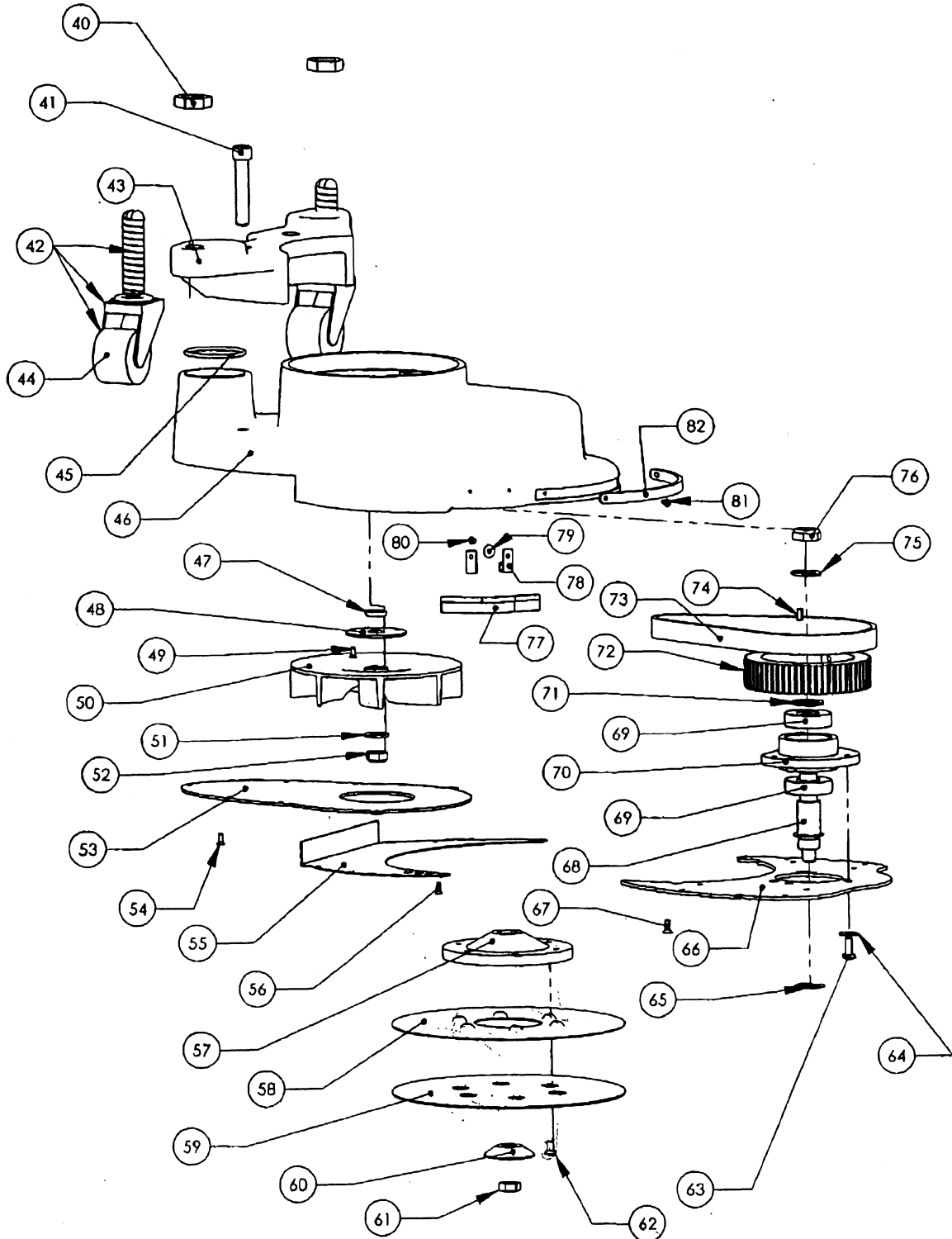
# PARTS LIST

*Please use Bona Part Number and Name on all orders*

	DESCRIPTION	QTY	P/N
	1/4-20 X 4 1/4" SOCKET CAP BOLT	4	AS3000227
2	CHASSIS HANDLE	1	AS3000167
3	8-32 X 1 1/4" SOCKET FLAT SCREW	2	MISC - ITEM #3 - ADVANTEDGE
4	8-32 X 1/2" PHIL FLAT SCREW	2	MISC - ITEM #4 - ADVANTEDGE
5	CHASSIS MOTOR COVER	1	AS3000165
6	SWITCH ASSEMBLY W/WIRES	1	AS3000194
7	110 V MALE PLUG, TWIST LOCK	1	AS19732
8	INCOMING POWER CORD ASSEMBLY	1	AS3000196
9	STRAIN RELIEF	1	AS3000184
10	6-32 X 1/2" PHIL PAN SCREW	1	MISC - ITEM #10 - ADVANTEDGE
11	6-32 KEP NUT	1	MISC - ITEM #11 - ADVANTEDGE
12	MOTOR CONTROLLER	1	AS3000160
13	8-32 X 1/2" PHIL PAN SCREW	2	MISC - ITEM#13 - ADVANTEDGE
14	#8 LOCK WASHER	2	MISC - ITEM #14 - ADVANTEDGE
15	FINGER GUARD ASSEMBLY	1	AS3000229
16	"T" WRENCH	1	AS3000172
17	1/4-20 X 3/4 SOCKET HEAD CAP SCREW	4	MISC - ITEM #17 - ADVANTEDGE
18	MOTOR, BRUSHLESS	1	AS3000159
19	SMALL PULLEY	1	AS3000185
20	10-32 X 3/16 SET SCREW	1	MISC - ITEM #20 - ADVANTEDGE
21	KEY 1/8" X 1.06"	1	AS3000156
22	SNAP RING	1	MISC - ITEM #22 - ADVANTEDGE
23	HALOGEN LAMP	1	AS3000161
24	LAMP ASSEMBLY	1	AS3000197
25	SPACER .625 FOR #8 SCREW	2	MISC - ITEM #25 - ADVANTEDGE
26	LAMP ASSEMBLY	1	AS3000197
27	#8 LOCK WASHER	2	MISC - ITEM #27 - ADVANTEDGE
28	8-32 X1" PHIL PAN SCREW	2	MISC - ITEM #28 - ADVANTEDGE
29	ADVANTEDGE NAME PLATE	1	AS3000224
30	4-40 X 3/16" PHIL PAN SCREW	2	MISC - ITEM #80 - ADVANTEDGE



# ADVANTEDGE EXPLODED VIEW



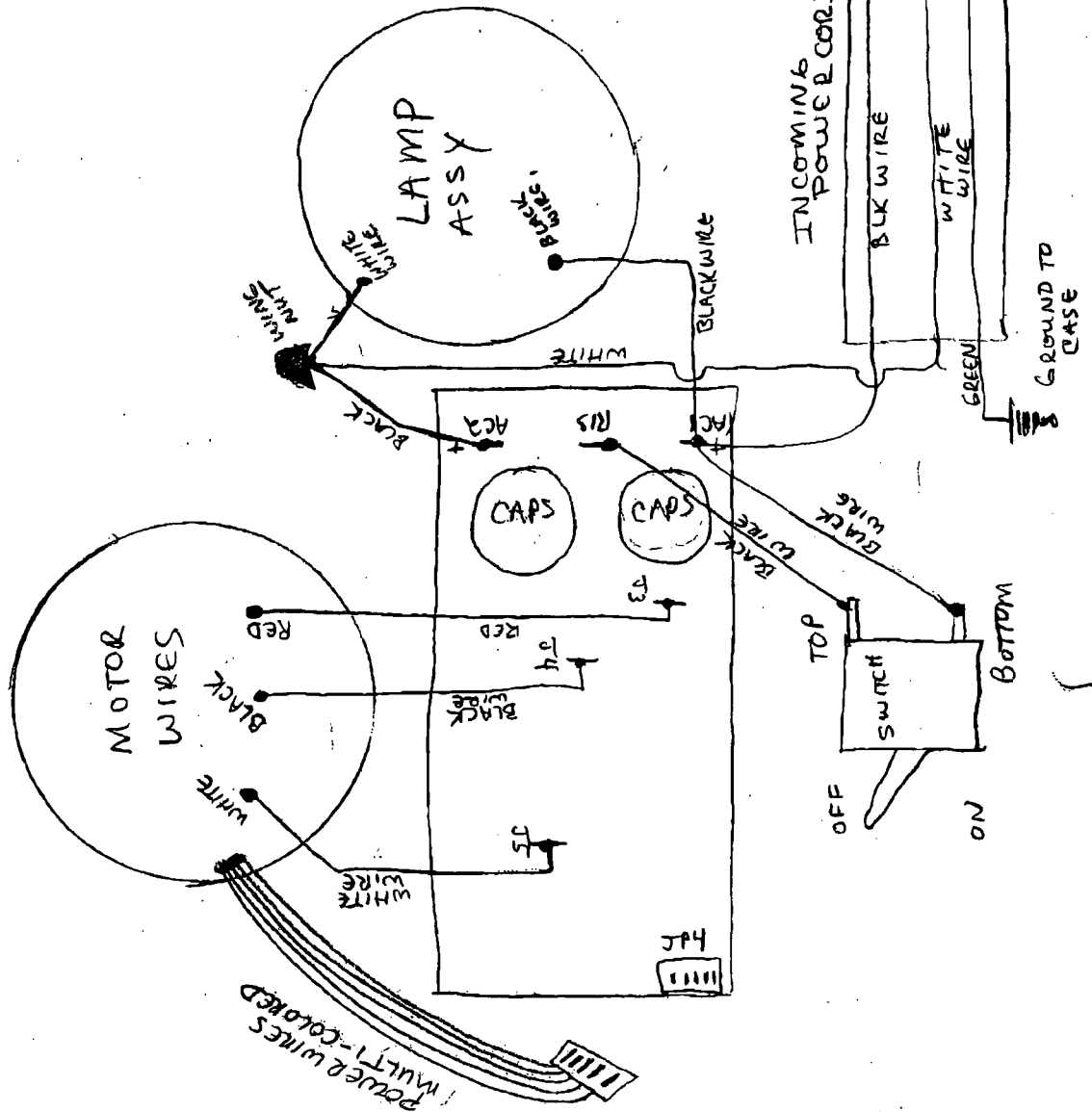
# PARTS LIST

*Please use Bona Part Number and Name on all orders*

DESCRIPTION	QTY	P/N
40 5/8-11 CASTER ADJ. JAM NUT	2	AS3000181
41 3/8-16 X 2" SOCKET HEAD CAP SCREW	2	MISC - ITEM #41 - ADVANTEDGE
42 CASTER ASSEMBLY W/ADJ. POST	2	AS3000328
43 CHASSIS, CASTER BRACKET	1	AS3000166
44 SWIVEL WHEEL - LT. GREY RUBBER	2	AS20945320.399
45 "O" RING - DUST EXHAUST	2	AS3000187
46 CHASSIS, BASE	1	AS3000164
47 SEAL, MOTOR SHAFT	1	AS3000188
48 RETAINER, SEAL	1	AS3000226
49 4-40 X 1/4" PHIL FLAT SCREW	3	MISC - ITEM # 81 - ADVANTEDGE
50 FAN, DUST	1	AS3000179
51 3/8" FLAT WASHER	1	MISC - ITEM #51 - ADVANTEDGE
52 3/8 - 24 NYLOC THIN JAM NUT	1	MISC - ITEM #52 - ADVANTEDGE
53 FAN COVER PLATE ASSEMBLY	1	AS3000199
54 4 - 40 X 1/4" PHIL FLAT SCREW	7	MISC - ITEM # 81 - ADVANTEDGE
55 PLATE, MOON	1	AS3000175
56 4 - 40 X 1/4" PHIL FLAT SCREW	8	MISC - ITEM #81 - ADVANTEDGE
57 SANDING CENTER	1	AS3000171
58 SANDING DISC	1	AS3000174
59 VELCRO DISC, RED	1	AS0222059
60 PAPER RETAINING WASHER	1	AS0222053
61 PAPER RETAINING NUT 3/8-24	1	AS3000334
62 10 - 24 X 3/8" PHIL FLAT SCREW	6	AS3000180
63 10 - 32 X 1/2" PHIL PAN	3	MISC - ITEM #63 - ADVANTEDGE
64 #10 FLAT WASHER	3	MISC - ITEM #64 - ADVANTEDGE
65 ANTI-SEIZING WASHER	1	AS3000152
66 PLATE, BEARING MOUNTING ASSEMBLY	1	AS3000190
67 6 - 32 X 3/8" PHIL FLAT	8	MISC - ITEM #67 - ADVANTEDGE
68 BEARING SHAFT -	1	AS3000169
69 BEARING 6003	2	AS0916003
70 BEARING BLOCK W/PIN	1	AS3000170
71 WASHER, DISHED 5/8	1	AS3000186
72 LARGE PULLEY	1	AS3000183
73 DRIVE BELT	1	AS3000189
74 KEY, 1/8" X .375	1	AS3000154
75 1/2" FLAT WASHER	1	MISC - ITEM #75 - ADVANTEDGE
76 NUT NYLOC THIN HEX 1/2" - 20	1	AS3000153
77 BRUSH 3" STRIP	1	AS3000155
78 BRUSH HOLDER	2	AS3000157
79 WASHER, #4 NYLON	1	MISC - ITEM #79 - ADVANTEDGE
80 4 - 40 X 3/16" PHIL PAN SCREW	2	MISC - ITEM #80 - ADVANTEDGE
81 4 - 40 X 1/4" PHIL FLAT SCREW	2	MISC - ITEM # 81 - ADVANTEDGE
82 BUMPER STRIP	1	AS3000158

ADVANTEDGE

REV-I CONTROLLER  
BOARD INSTALLATION



## PREVENTATIVE MAINTENANCE

1. Blow the dust out of edger regularly—every day if possible. Accumulating dust causes excess heating and faster wearing of parts.
2. Check often for damaged or bent disc. This condition may result in excessive vibrations and uneven sanding patterns.
3. Check the Power Cable and Connectors for continuity and tight connections. Low voltage usually means premature failure of the machine or many of its parts.
4. Check dust collection system. Make sure the airway is clear of debris that may block the fan's operation.

Distributed by:



Bona Service Center  
14805 East Moncrieff Place  
Aurora, CO 80011-1207  
303-371-1411 or 800-872-5515  
from 7:30 a.m. to 4:30 p.m. MST  
FAX 303-373-9525